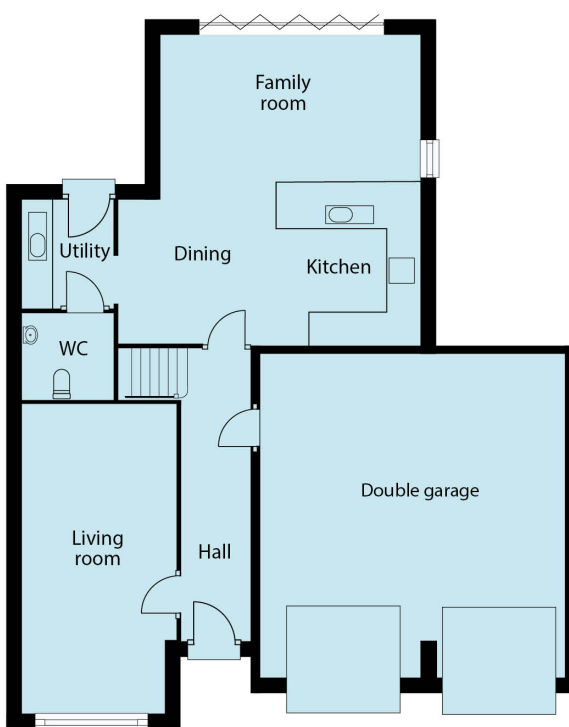




The Ollerton - Five Bedroom Detached with Double Garage

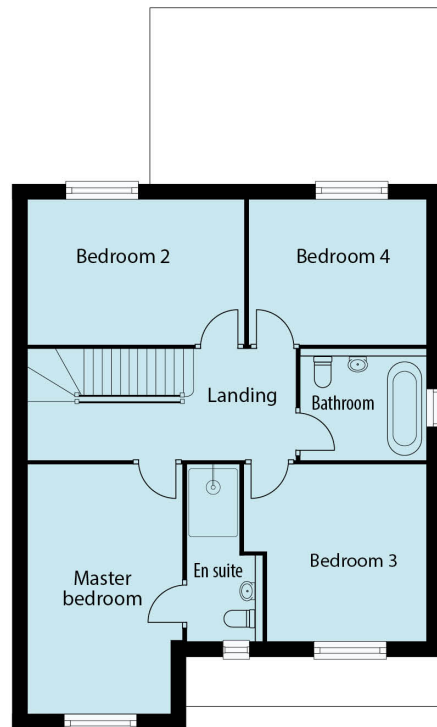
Plots 6 & 7

With a luxurious kitchen incorporating generous living/dining space, this elegant design is well equipped for families and entertaining guests.



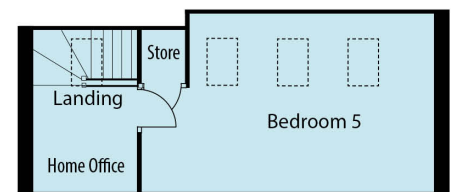
Ground Floor

	MM	FEET
Living Room	5.64m x 2.91m	18'6" x 9'6"
Kitchen/Dining/ Family Room	5.63m x 5.51m	18'5" x 18'1"
WC	1.62m x 1.61m	5'4" x 5'3"
Utility Room	1.93m x 1.62m	6'4" x 5'4"



First Floor

	MM	FEET
Master Bedroom	4.54m x 2.79m	14'11" x 9'2"
En suite	2.21m x 1.39m	7'3" x 4'7"
Bedroom 2	3.93m x 2.59m	12'10" x 8'6"
Bedroom 3	3.19m x 2.87m	10'6" x 9'5"
Bedroom 4	3.21m x 2.59m	10'6" x 8'6"
Bathroom	2.26m x 2.05m	7'5" x 6'9"



Second Floor

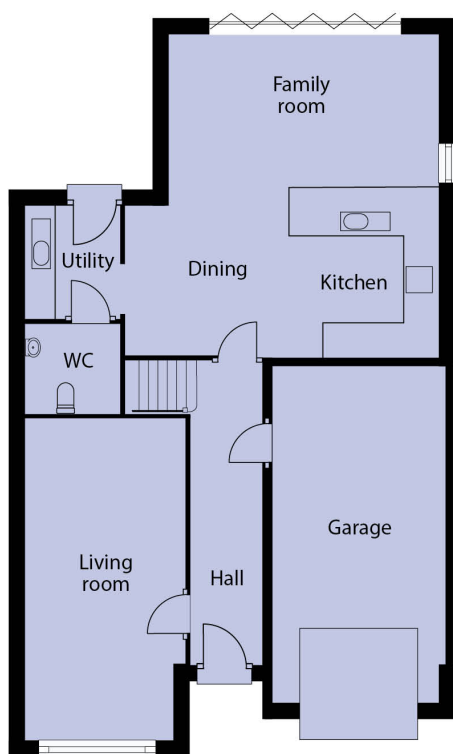
	MM	FEET
Bedroom 5	5.1m x 4.26m	16'7" x 13'11"
Office / Landing	3.1m x 2.77m	10'2" x 9'1"



The Brinscall - Four Bedroom Detached with Garage

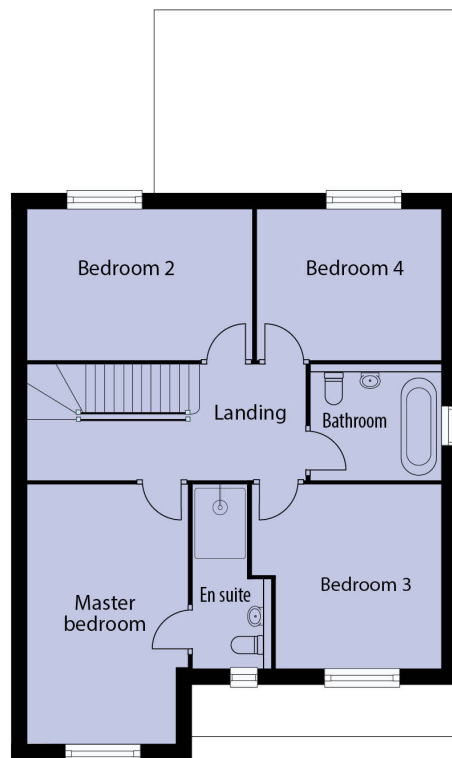
Plots 8 & 9

The stylish design provides spacious yet-easy-to manage living within a beautifully balanced layout including a large dining kitchen featuring bi-fold doors.



Ground Floor

	MM	FEET
Living Room	5.64m x 2.91m	18'6" x 9'6"
Kitchen/Dining/ Family Room	5.63m x 5.51m	18'5" x 18'1"
WC	1.62m x 1.61m	5'4" x 5'3"
Utility Room	1.93m x 1.62m	6'4" x 5'4"



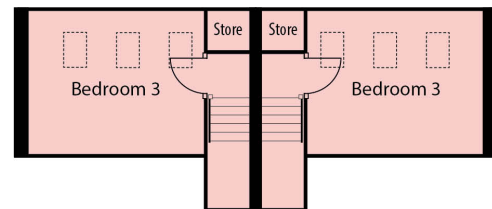
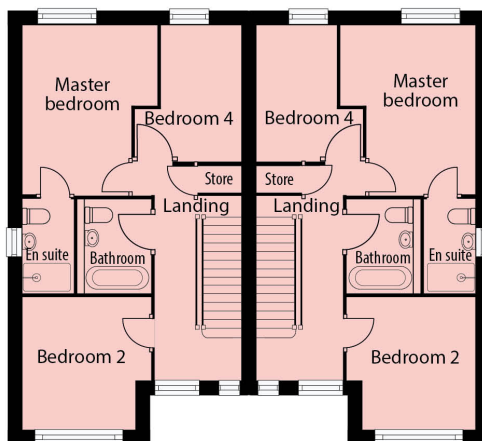
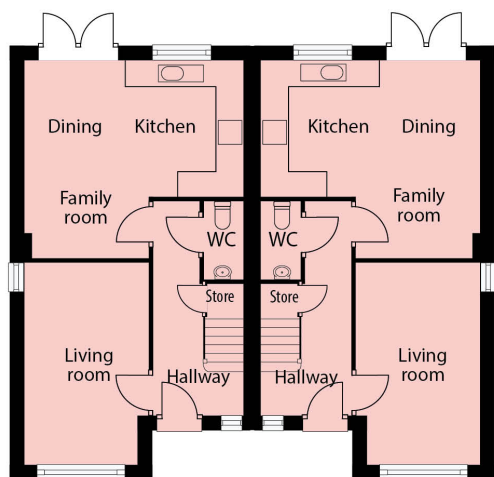
First Floor

	MM	FEET
Master Bedroom	4.54m x 2.79m	14'11" x 9'2"
En suite	2.21m x 1.39m	7'3" x 4'7"
Bedroom 2	3.93m x 2.59m	12'10" x 8'6"
Bedroom 3	3.19m x 2.87m	10'6" x 9'5"
Bedroom 4	3.21m x 2.59m	10'6" x 8'6"
Bathroom	2.26m x 2.05m	7'5" x 6'9"



The Roddlesworth - Four Bedroom Semi-detached with optional Detached Garage **Plots 4 & 5**

This superb three storey design features impressive open-plan space within a large, dining kitchen and spacious bedroom accommodation across the two upstairs floors.



Second Floor

	MM	FEET
Bedroom 3	3.92m x 3.27m	12'10" x 10'9"

Ground Floor

	MM	FEET
Living Room	4.58m x 2.90m	15'1" x 9'5"
Kitchen/Dining/ Family Room	4.95m x 4.60m	16'2" x 15'0"
WC	1.80m x 0.90m	5'11" x 2'11"

First Floor

	MM	FEET
Master Bedroom	3.84m x 3.04m	12'7" x 9'11"
En suite	2.16m x 1.18m	7'11" x 3'10"
Bedroom 2	3.50m x 3.00m	11'4" x 9'8"
Bedroom 4	2.95m x 1.83m	9'8" x 6'0"
Bathroom	2.16m x 1.70m	7'11" x 5'7"

Elevations, drawings, floor plans and other illustrations including measurements are approximate and indicative for reference only. Exact plot specification, details of external and internal finishes, dimensions and floor plan differences are available from our sales negotiator. These particulars do not form part of any warranty or contract.